

# THE POINT NEWS



After 36 races against schools such as Yale University and Georgetown University, the SMCM Sailing team won the ICSA Coed National Championship in San Francisco.

## Seahawk Sailing Wins 2009 ICSA Coed National Championship

By LISA HARMON  
Staff Writer

On June 3, seven St. Mary's sailors and their coaches competed in this year's Inter-Collegiate Sailing Association/Gill Coed Dinghy National Championship. Three days and 36 races later, the Seahawks succeeded in taking first place.

Originally ranked fourth, the team faced warm breezes and good competition against schools such as Yale University, Georgetown University, Old Dominion University, and Boston College.

Alumna Jen Chamberlain, seniors

Jesse Kirkland, Mike Kushner, Kelly Wilbur, and juniors Maddie Jackson, Megan Magill, and Michael Menninger made up the team that represented SMCM, and prepared all year for this summer's ICSA national championship.

"Winning a national championship is the end goal for every college sailing team. Sailing is unique that you do not match up with one other school at one time but up to 17 other schools every weekend. Throughout the seasons (fall,

*Continued on Page 3*

## Human Rights Activist Named Nitze Senior Fellow



PHOTO COURTESY OF DARFUR.ORG

Among rock stars turned politicians, Prendergast is a politico who seems more like a rock star," wrote the Sudan Tribune, regarding his work with Don Cheadle, Ryan Gosling and Angelina Jolie.

By MARIEL SAEZ  
Editor-in-Chief

John Prendergast, high profile human rights activist and author, has been named the 2009-2010 Paul H. Nitze Senior Fellow and is expected to visit campus three times over the year.

The Nitze Senior Fellow is appointed by the Provost and visits the College three times a year to give public lectures and inter-

act with students and faculty. "We work them hard," said Director of the Nitze Scholars Program, Michael Taber. "For example, over his three visits, last year's Fellow, T.R. Reid, met with classes in Computer Science, Economics, Philosophy, Political Science, Psychology and Sociology, along with CORE 101 and Nitze Seminars."

Dr. Taber also schedules relaxed activities as well, including a bike ride with students for Mr. Reid and a discussion in kayaks for the 2007-08 Fellow Kathleen Kennedy Townsend.

Mr. Prendergast's work has focused on Africa, especially on Darfur and the Congo. He is co-founder of the Enough Project, an initiative to end genocide and

*Continued on Page 3*

## PRESIDENTIAL SEARCH UPDATE: FINAL FOUR SELECTED

By MARIEL SAEZ  
Editor-in-Chief

The Presidential Search Committee has invited four candidates to come to campus for a final round of meetings with the St. Mary's College community, according to the Co-Chair of the Presidential Search Committee, Trustee Molly Mahoney.

With the help of a national executive search firm, Isaacson Miller, the Search Committee spent the summer reviewing over one hundred resumes and narrowed the candidates to twelve. The twelve candidates were selected for face-to-face interviews with the Committee. The Committee then

spent July 27<sup>th</sup>, 28<sup>th</sup> and 29<sup>th</sup> reviewing the twelve before selecting the final four. The final four candidates will each spend two days on campus meeting with the various constituencies of the College community.

**"WE WERE FORTUNATE TO HAVE SUCH A STRONG GROUP OF CANDIDATES."**

-Molly Mahoney, Co-Chairperson of the Presidential Search Committee

The names of the candidates and the dates of their visits have not been announced. However, the Committee did state that they were impressed by the pool of applicants.

"Each of the twelve had outstanding careers and each had a deep commitment to the core St. Mary's mission. We were fortunate to have such a strong group of candidates," said

*Continued on Page 3*

## Capital Design Advisory Prepares Community for Anne Arundel Replacement



PHOTO BY MATT MOLEK

The site proposal will highlight the Historic City's Middle Street, which lies beneath old Anne Arundel.

By MARIEL SAEZ  
Editor-in-Chief

The Capital Design Advisory (CDA) Committee held an open house on Aug. 13<sup>th</sup> and a public meeting on Aug. 19<sup>th</sup> to discuss the replacement of Anne Arundel Hall and the new Maryland Heritage Interpretive Center.

The meetings are intended to inform the community of the relationship between the College and

Historic St. Mary's City (HSMC) and how the prospective site plans will better serve the needs of both institutions. Additionally, the presentations describe how the site plans will foster joint educational programs and promote additional interaction as envisioned by the 1997 State legislation that formally affiliated the College and HSMC. "The buildings are a physical representation of the affiliation," said Dr. Michael J. G.

Cain, Director of the Center for the Study of Democracy.

According to the current site plan, the Anne Arundel replacement will house archaeological curation facilities for Historic St. Mary's City and space for the Anthropology Department, International Languages and Cultures Department, the Museum Studies Program, the Center for the Study of Democracy and the Blackstone Room.

HSMC's new interpretive center will replace the visitor's center that is currently located off Rosecroft Road. It will include a theatre, permanent exhibit gallery and temporary exhibit space.

The new construction is intended to alleviate major challenges facing both HSMC and the College. Renewal of accreditation at HSMC is contingent upon construction of new facilities that meet the standards for archaeology and museum curation. In addition, storage is becoming a problem with an archive of five million artifacts.

*Continued on Page 2*

## SMC RECOGNIZED AS DIVERSE, HAPPY

By MARIEL SAEZ  
Editor-in-Chief

*The Princeton Review*—an educational preparation and ranking company—placed St. Mary's College in the top fifteen for three categories in its 2010 edition of *The Best 371 Colleges*. The College placed fifth for "Lots of Race/Class Interaction," ninth for "Happiest Students" and 12<sup>th</sup> for "Most Beautiful Campus."

"I was very pleased with this distinction," said Acting President

and Provost, Larry Vote. According to Vote, "supportive relationships between students, faculty and staff, a residential community that creates its own fun and cohesiveness and an amazingly beautiful environment that naturally inspires good outcomes all contribute to the College's rankings."

Other factors include "a great proliferation of student driven activity that constantly evolves to fit the particular needs of the community and a palpable sense among

students, faculty and staff that a strong community is very important," he said.

Students agreed with Vote, with the *Review's* survey results serving as evidence. In order to rank top twenty schools in 62 categories, they have students complete surveys. Students from the College most agreed on a sense of happiness and safety, friendly students, a diverse group of students who commonly interact, having great athletic facilities and great food on campus.

### INSIDE THIS ISSUE:



A letter from the student trustee (PG. 2)



What's new at the library (PG. 2)



Lisa and Mari From the Patio (PG. 3)

## FROM THE CHIEF'S DESK

I joined the paper in Fall 2006 and found myself amongst ten or fifteen other first-years at the semester's first staff meeting. I tried not to draw attention to myself as the editors assigned stories to everyone seated at the table in the Club Room. I was waiting for something exciting and interesting to jump out at me before I committed to writing my first article for a college newspaper. Nothing had caught my eye and the group was discussing the Opinions Section next.

Next thing I know, my friend Lisa is going on and on about how "dangerous" exiting Guam parking lot is for someone who is learning to drive. Yes, Lisa, for the 1 percent of students who still have their learner's permit, perhaps it is "dangerous." But this certainly wasn't the article I was anticipating.

"Well, which one of you wants to write it?" asked the Editor-in-Chief.

"Mari, you should do it!" exclaimed Lisa. "I mean you don't have a story yet..."

"Cool, Lis. Thanks," I grudgingly responded. Needless to say, I didn't talk to her for about three days. I could go on about how ridiculous this story assignment was, but enough said. I had to write about a stop sign in the freshman parking lot.

A week later, as I was driving out of Guam, I found myself face to face

with a stop sign. All I could do was laugh uncontrollably until the car behind me started honking. Then it occurred to me that although I didn't feel particularly strong about the problem, my short argument in the newspaper had actually made a difference.

Though I felt it was a dumb assignment at the time, it also taught me an important lesson about St. Mary's:

**"A STUDENT'S VOICE ON THIS CAMPUS WON'T GO UNHEARD."**

There really is no story too small. A student's voice won't go unheard. There will be discussion, and in many instances, there will be change. I hope students take to heart how lucky we are that this community is inclusive. There are major decisions being made on campus this fall and we have the opportunity to voice how we feel about many of them. The Presidential Search Committee, the Capital Design Advisory Committee, the Working Group on Revenue Planning and Forecast and many other decision-making bodies invite students to engage in dialogue about the important issues facing our community. Rather than taking that for granted, get involved. If they are listening, then it's our responsibility to speak up.

*Mariel S. Saez*  
Editor-in-Chief  
msaez@smcm.edu

## CDA Unveils New Site Plan



PHOTO BY MATT MOLEK  
The proposed Maryland Heritage Interpretive Center will replace the current HSMC Visitor Center located off Rosecroft Road.

CONTINUED FROM PAGE 1

The construction will also offer space to accommodate the College's growing academic needs. The Museum Studies program already includes twenty-four students and is expected to grow with the newly established Martin E. Sullivan Scholars program. "Bringing together museum functions and academic functions will provide our students with experiences in and outside the classroom on a much more regular basis than is now the case," said Anthropology Chair Julie King.

A major discussion that took place at the Aug. 19 meeting included the pros and cons of tearing down Anne Arundel Hall, built in 1950, versus renovating it. According to Chip Jackson, Associate Vice President of Planning and Facilities, the College had preferred keeping Anne Arundel from a historical and a sustainability standpoint. However, two studies concluded that 85-90 percent of the materials would need replacing and the building would not be energy efficient.

According to Faden, the feedback has been mostly positive. "Once they had an opportunity to learn about the careful planning for the siting of the project and the attention taken to protect the cultural resources, most members of the community favored the plan," she said.

However, a few community members expressed dissatisfaction with the process. According to Jackson, they felt that periodic public meetings were not sufficient and that the public should be allowed input at every level of the decision making process. However, Jackson felt that

was "unrealistic."

The Committee will continue to work on the proposal with the campus community and is currently coordinating with the SGA and Faculty Senate on how to get as many people involved in the process. "Student engagement is very important to us, and we welcome students' interest as we go through this planning process," Jackson said.

### Capital Projects To Be Completed This Fall:

#### Shoreline

The College is incorporating wetland planning to protect living shorelines. The existing dock will be replaced and extended. It will incorporate wave strings to offer additional protection of the shoreline, serve as a launching facility, and provide docking space for dinghies.

#### Bruce Davis Renovation

Theater renovation, which will be complete this September, includes new theater lighting, a new light and sound booth, new lobby entry, larger seating capacity, increased storage, new acoustical wall panels, new flooring and the replacement of the existing rooftop mechanical air handling unit.

#### Calvert Hall Accessibility Ramps

This fall, new masonry walls, metal hand rails and an automatic door opener will be installed in Calvert Hall to offer better accessibility to the offices located on the first floor.



PHOTO BY MATT MOLEK

Shelving on the second floor will be removed to provide study space.

## Upgrade Your Study Habits in the Upgraded Library

SUBMITTED BY  
CELIA RABINOWITZ

Director of the Library and Media Center

While you were away for the summer the SMCM Library has made some changes!

Need a place to study or work on a paper late at night? The Library Annex now has two classrooms AND a computer lab available for you to use over night. The lab (LI112) is key card access only. The posted schedule will show when library instruction or Writing Center classes are being held in the lab. At all other times students are welcome to use the lab and the printer. Classrooms 114 and 115 will continue to be open overnight all semester.

Last spring the College announced that the national fiscal crisis was hitting close to home and the College's endowment had been affected. As a result, none of the endowment funds are paying out during this year. The Library is fortunate to have an endowment of over \$2.5 million dollars, but it is important to keep that capital steady so that we can benefit from the interest when the economy is good. In order to make up for a shortfall of over \$100,000 that we have had available to use for purchasing library materials, we decided to take advantage of a two-year study we just completed on the use of our journals in print.

Journals in print? That you can hold in your hands? Yes – we still have them. We took our use study and shared results with faculty. We were able to show how many times a journal had been used over two

years (current and older issues). We proposed cancelling subscriptions for any journal title that had only 0-3 uses over that time. Many of the journals also come online (we have access to about 20,000 titles online). Once we finished the project we had cancelled over 400 titles and saved over \$100,000! The empty metal shelving is where we consolidated the titles that are left. Once we get the shelving removed we will provide more seating for all of you.

Come meet our new librarian! Pamela Mann arrived during the summer. She will be at the reference desk, offering instruction, and working closely with the Montgomery Hall departments, International Languages and Cultures, and Asian Studies. She comes to us from University of Texas at Austin where she worked in the Benson Latin American Collection. She has also worked at Yale. Pamela is from Queens, New York. Her office is LI127.

Try WorldCat Local, our newest discovery tool. Search a universe of over 50,000 libraries with displays of SMCM, USMAI, and global results all on one screen. Check out the book covers, place your requests, and even find some articles with full text (and more to come).

Hey – did you see the new chairs on the second floor yet? They look great so PLEASE don't spill anything on them.

This semester watch for librarians in the ARC and the Campus Center, available to answer your most pressing

## Student Trustee Seeks Student Feedback

Hi St. Mary's!

For those of you who don't know me, my name is Debbie Travers and I am this year's student trustee. I want to take the opportunity to introduce myself and explain a little about my position. The student trustee serves for one year as a liaison between the student body and the College's Board of Trustees.

So what does that really mean? It means that I bring your questions, concerns, and opinions to the Board to help them serve the College with the best interests of the students in mind. I also help answer questions about decisions being made by the administration and relay what happens during Board meetings.

This is obviously an important job and I absolutely need your help! I can't effectively communicate the student opinion if I don't know it, so I'm looking for lots of student feedback throughout the year. If you have a question or a concern about something, I highly encourage you to get in touch with me to talk about it!

So let's get started! What are your concerns for this year? If you are a first year or transfer student, what drew you to St. Mary's? If you're a returning student, what would you like to see be improved on from last year? What would you like to see stay the same? How has the recession affected your college

experience and is there anything that the College can do to help? What questions do you have for me? My email address is dmtravers@smcm.edu, and I would love to hear from you!

Additionally, I am also serving as one of the student representatives on the presidential search committee. More

research questions!

As always, submit your suggestions, praise, or complaints using the suggestion box on the Circulation counter, or contact me directly at x4267 or cerabinowitz@smcm.edu.

St. Mary's College of Maryland  
Campus Center Room 145B  
18952 E Fisher's Road  
St. Mary's City, Maryland 20686  
Phone: (240) 895-4213  
Fax: (240) 895-4445  
E-mail: [pointnews@smcm.edu](mailto:pointnews@smcm.edu)

Editor-in-Chief  
MARIEL SAEZ

Managing Editor  
MATT MOLEK

Online Editor  
DAVE CHASE

Faculty Advisers  
MARC APTER

The Point News is published bi-weekly during the academic year by the students of St. Mary's College of Maryland. The ideas and opinions expressed on its pages are not necessarily those of the College.

We welcome all readers to submit letters. Letters can be sent to *The Point News*, dropped off at our office in the Campus Center, or e-mailed to the staff mailbox at [pointnews@smcm.edu](mailto:pointnews@smcm.edu). All letters and articles are due by 5 p.m. on the Thursday before an issue is printed. We do not guarantee that any letter or article will be printed. The author should sign his/her name, provide his/her phone number, hometown and class standing if they are a student. Letters of less than 250 words are preferred. Letters are more likely to be printed if they have relevance to a considerable portion of the college community, are likely to spark dialogue, or present new ideas. The opinions expressed in commentaries and letters are solely those of the writers and not necessarily the views of *The Point News* or St. Mary's College of Maryland. Unsigned editorials represent the opinion of at least two-thirds of the editorial board. We reserve the right to edit any work submitted to *The Point News* in order to correct errors in spelling and grammar, or to shorten length.

Anyone may place advertising in *The Point News*. For current advertising rates, please e-mail our Advertising Manager at [madamiano@smcm.edu](mailto:madamiano@smcm.edu). Advertisements represent no endorsement by *The Point News* or St. Mary's College.

- 2008, *The Point News*.

## DAILY GRIND NEWS

The Daily Grind now serves Equal Exchange organic and fair trade coffees! Equal Exchange coffees are ground in the store before brewing, thus providing the freshest brewed coffee that we can to you, our customers!



### FUNNY FARM FARMER'S MARKET



Come get your fresh fruits, vegetables, and baked goods at the Farmer's Market every Monday at the Campus Center!

Also, don't forget: Chick-Fil-A every Thursday at the Grind!



The Daily Grind  
PHONE 240.895.4325

HOURS  
MON-FRI  
730am-midnight  
SAT & SUN  
10am-midnight

## From the Patio to the First-Years

By LISA HARMON & MARIEL SAEZ  
Staff Writer & Editor-in-Chief

First weekend on campus, we were caught off guard when every upperclassman snickered as we walked into brunch freshly showered, dressed in something other than sweatpants, hair blown dry and make up on our faces. We thought, "What's the big deal?" (If you find yourself thinking the same thing, first-years, give it a week and you'll get it.) Later, we heard seniors complaining that the demographics of the College were changing.

They saw us as more preppy, less environmentally aware, terrified of Frisbees and naive to the wonders of St. Mary's.

Meanwhile, we scoffed at the lack of hygiene and ran over as many Frisbees with our cars as possible. (Hey, if you ever lived on PG's first floor, you know how frustrating it is for your window to get hit 10 times a day). We quite literally turned our backs on bicycle/pedestrian etiquette on the path and religiously attended breakfast before our 8AMs.

But here we are sitting on the patio shoeless, in Seahawk sweatpants, tea in hand and huge sunglasses desperately trying to

disguise ourselves. (Note: you'll learn quickly that on a campus of 2,000 students, it takes a lot more than a pair of sunglasses to hide



Photo Submitted by Lisa Harmon  
Lisa and Mari together as first-years.

from the night before). We find ourselves thinking "Who are these kids that were born in the 90s?!" But before we make them subject of our snickering, it occurred to us: those before us were wrong—the Admissions office isn't accepting different kinds of students over the years. Rather, the College culture is changing the students admitted.

Looking forward from our first few days on campus we never would have expected (one of us to be an) avid Frisbee golfer, so interested in being green and rely on our bikes to get everywhere from class to off-campus parties. Being here inspired us to drop our dry clean-only dresses for swimsuits and

shorts and substitute Fiji bottles for Nalgene. We partied hard with the kid from chem class just as much as the girls we shared a hall with and spent afternoons having coffee with professors. We went to soccer games, Last Lectures and the Vagina Monologues (even though the only vaginas we ever thought we'd see were our own). We even made sure to stop in at Get Your Float On because who the hell knows what that really means, but who cares -- it was awesome.

Being at St. Mary's forces all of us out of our comfort zone and onto a more exciting adventure. After all, this is COLLEGE. The campus culture compels you to friend everyone, try new things, put yourself out there and do somethin' crazy! But don't worry if things don't fall into place right away. You'll find your groove just as we did on the patio.

We hope that you'll open up to whatever change the wind off the River blows your way and embrace it. We can only promise that after the four years there's one thing that will never go away—how enthralled we all are at the beauty of this College as we view it from the patio.

## Presidential Candidates Coming to Campus

CONTINUED FROM PAGE 1

Chairperson Mahoney.

The Committee is still finalizing plans for the visits and is expected to announce the names of candidates and specific dates of their visits mid-September. In the meantime, the administration remains short-staffed as the positions for Vice President of Development and Secretary of the Board of Trustees remain unfilled.

Since May, Vice President of Business and Finance, Tom Botzman, has also taken on the responsibilities of the Vice President of Development and the Secretary of the Board of Trustees. Salvatore Meringolo held these positions from 1997 until this

May and has since left to become the Vice President for Advancement and University Relations at the University of Mary Washington.

Without Meringolo and former President Margaret O'Brien on campus, Botzman and Provost Larry Vote have been occupying four Administrative positions and will continue to do so until the next president is named, according to Botzman. "Once the new President is hired, they'll evaluate which direction they want to go in, decide how they will want to structure the administration, and then begin the hiring process," he said. The time frame for the next steps will be formally announced following the campus visits.

## Prendergast to be 2009-2010 Nitze Senior Fellow



PHOTO BY RICK WILKINSON, COURTESY OF NPR

John continues to make noise about something that needs constant noise," said Don Cheadle about their work in Darfur.

CONTINUED FROM PAGE 1

crimes against humanity. During the Clinton Administration, Mr. Prendergast was involved in several peace processes in Africa while he was Director of African Affairs at the National Security Council and Special advisor at the State Department.

He has also worked for members of Congress, the United Nations, humanitarian aid agencies, human rights organizations and think tanks. His 2007 book *Not on Our Watch: The Mission to End Genocide in Darfur and Beyond*, co-authored with actor Don Cheadle, was a New York Times

bestseller.

He is currently working on two books for publication by Random House, one focusing on his 25 years in the Big Brother program and the other about human rights and peace activism. Because both books are due within the same week, his visits have not been scheduled. According to Taber, they should be set within the coming weeks.

"I know that Prendergast's schedule will be more challenging than most," Taber said. "But I hope we can find dates when he can spend the better part of a day or two with in our beautiful and welcoming community."

## Sailing Team Takes National Title



Since 1991, SMCM Sailing has won 11 national sailing titles.

CONTINUED FROM PAGE 1

spring) you are constantly racing against the best so across the board everyone is improving all year," Chamberlain said of the regatta.

Menninger said, "Before a big regatta, like every sporting event, people get nervous and I tried my best to stay calm and run through the motions." And running, or rather sailing, through the motions is ex-

actly what the team did. With A-Division up first, Yale's performance momentarily broke the Hawk's seven-point lead. Kirkland, Jackson, and Magill came back and finished 13-5 to tie the two leading teams. "We have been working all year towards the Nationals. After school ended, we continued our training at Point Lookout and then over in Santa Cruz, CA to better ourselves

in the conditions present in San Francisco," said Kirkland. And their year-round dedication continued to show as the event went on.

The Hawks continued to gain on Yale when the B-Division put the team ahead. However, after a photo finish by the A-Division, it was up to the B-Division to bring the team back down in points. "Most National championships come down to the last few races. In our case it came down to us and Yale at the end and our job was to beat them," said Wilbur of the close scores. "After our second place finish at Team Race Nationals, the team kind of regrouped and we lit a fire under ourselves. We knew we were inches from the team race title and we just wanted more. We went sailing and had a great time and the outcome reflected our hard work and devotion," she continued.

Chamberlain also described the extremely close competition towards the very end. "Turning a 9th [place] to a 7th [place] or a 12th [place] to a 10th [place] is so important because your goal is to have to lowest amount of points...

St. Mary's was leading for the first two days with a nice buffer of points between us and Georgetown and Yale. The third day Yale fought hard and had a lead over us in the final races." Looking back on the final race Chamberlain recalls watching Kirkland and Menninger "so far ahead of the rest of the fleet really fighting it out. Yale was leading by three points going into the last set...very exciting."

In the final race Chamberlain and Menninger posted a 6-1 over Yale's 14-16, putting the Hawks in first place by twenty points over Yale. Yale competed hard Menninger comments, "With the competition being so tight, it was really close to the end."

This is the third time in the college's history to take the title. But according to Kirkland, "having everybody sail in the Championship, that was a true team victory."

## Calendar of Events!

Tuesday, September 1

5:00 p.m.  
Seahawk Stadium  
Men's Soccer vs Johns Hopkins

Wednesday, September 2

7:00 p.m.  
ARC Arena  
Volleyball vs Randolph Macon

Friday, September 4

4:00 p.m.  
Campus Center Patio  
Club Fair

5:00 p.m.  
Campus Center 205  
Club Sports Information Meeting

6:00 p.m.  
Campus Center Patio  
Welcome back weekend concert featuring Morsoul

7:00 p.m.  
Cole Cinema  
Star Trek

Saturday, September 5

9:00 p.m.  
Townhouse Greens  
"Drive-In Movie"  
Star Trek

Monday, September 7

3:00 p.m.  
River Center  
Ice Cream Social

Tuesday, September 8

4:00 p.m.  
Seahawk Stadium  
Field Hockey vs Goucher

Wednesday, September 9

4:40 p.m.  
Schaefer 106  
Natural Science & Math  
Colloquium Speaker: Ecologist  
and Evolutionary Biologist,  
Mitchell Eaton

Tuesday, September 8

12:00 p.m.  
Seahawk Stadium  
Field Hockey vs Wesley

4:00 p.m.  
Seahawk Stadium  
Women's Soccer vs Messiah

Want to see  
your event in  
the calendar?

E-mail it to The  
Point News at  
pointnews@  
smcm.edu.

## CAMPUS STORE BACK TO SCHOOL SPECIALS

Got an old clunker  
computer?

Check out our laptop bundle deals!  
Netbook bundles starting at \$349  
Notebook bundles starting at \$599!

LAPTOPS AVAILABLE:

- Acer Aspire One
- HP Mini
- HP 4510S T1700
- HP 4510S T6570



20% OFF  
BACKPACKS

SALE ENDS SEPT 5

HOURS  
M-TH 7:30AM-8:00PM  
FRI 7:30AM-5:00PM  
SAT 10:00AM-5:00PM  
SUN 12:00PM-5:00PM



We're Here for You!!

PHONE  
240.895.4420

INTERNET  
smcmbooks.com

A nonprofit organization owned and operated by St. Mary's College of Maryland

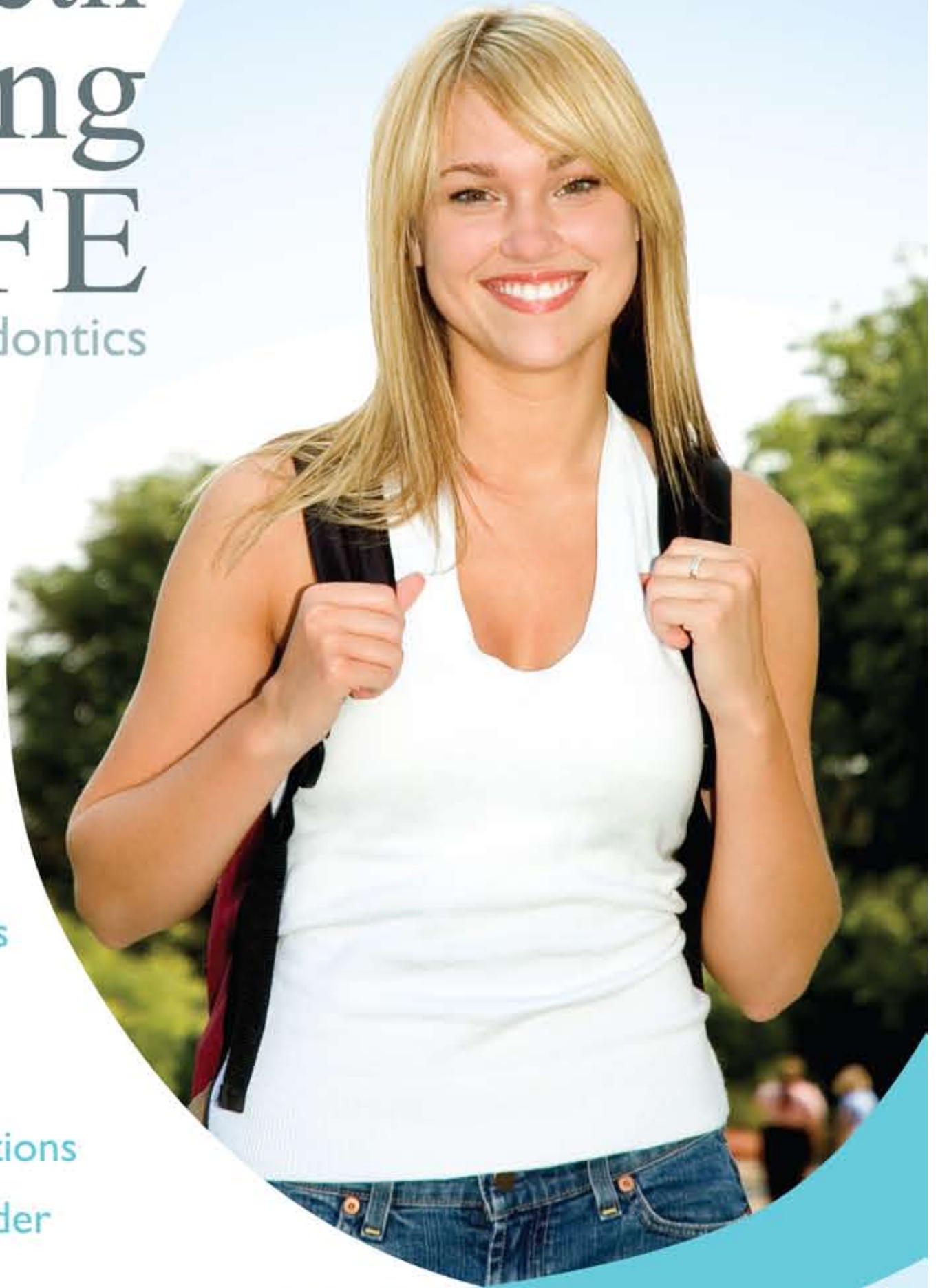
Lexington Park - Six Miles From St. Mary's College

ONLY AVAILABLE AT TIDEWATER DENTAL

# FREE Teeth Whitening for LIFE

Now Providing Orthodontics

- Cosmetic Dentistry
- Sedation Dentistry
- Implant Dentistry
- No Wait Dentistry
- Cable TV in Every Room
- Extreme Smile Makeover
- Interest Free Payment Plans
- Most Insurances Accepted
- One Stop Dental Practice
- Needle Free/Drill Free Options
- An official **invisalign**® provider



**TIDEWATER**  
Dental

*Something Worth Smiling About*

Dr. Michael W. Owens, DDS  
Dr. David J. Cooper, DDS  
Dr. Wayne L. O'Roark, DDS, DABOI  
Dr. Joseph Wareham, DMD

**(301)862-3900**

[www.TidewaterDental.com](http://www.TidewaterDental.com) 21534 Great Mills Road, Lexington Park, MD 20653